

## 1. General

This module provides an interface between the Allegretto A44 and A88 multiroom audio systems and the Easyplus Home Automation system.

Commands can be sent to power on/off the unit, mute outputs, control Volume and tone levels and choose the input source.

Status information from the allegretto is sent back to the bus.

This allows touch screens to show the actual status of the Allegretto system.



## 2. Installation & connections

The module is simply connected to the bus on one side and to the Allegretto system on the other side. No other connections are needed.

Before applying power you should check if all connections are correct, connecting 24V to the bus inputs will damage the module and is not covered under warranty.

## 3. Module software configuration

The base address of the module should be programmed in the Easylink software.[1]

Push the program button in Easylink and then push the button on the module to program the address.

The program LED will light and blinks when the button on the module is pushed to confirm the programming.

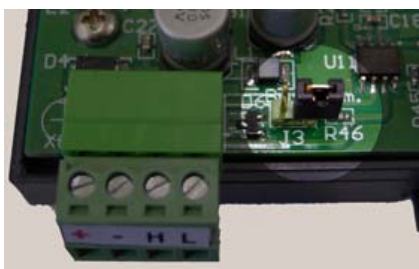
Figure 1 base address programming



## 4. Module hardware configuration

If the module is located at the endpoint of the bus then it should be terminated by placing a jumper on the 2 pins of J3 (see picture).

Figure 2 Bus termination



1 You can download this software from our website <http://www.apexsyst.com> , or you can request it via email.

Figure 3 module connections

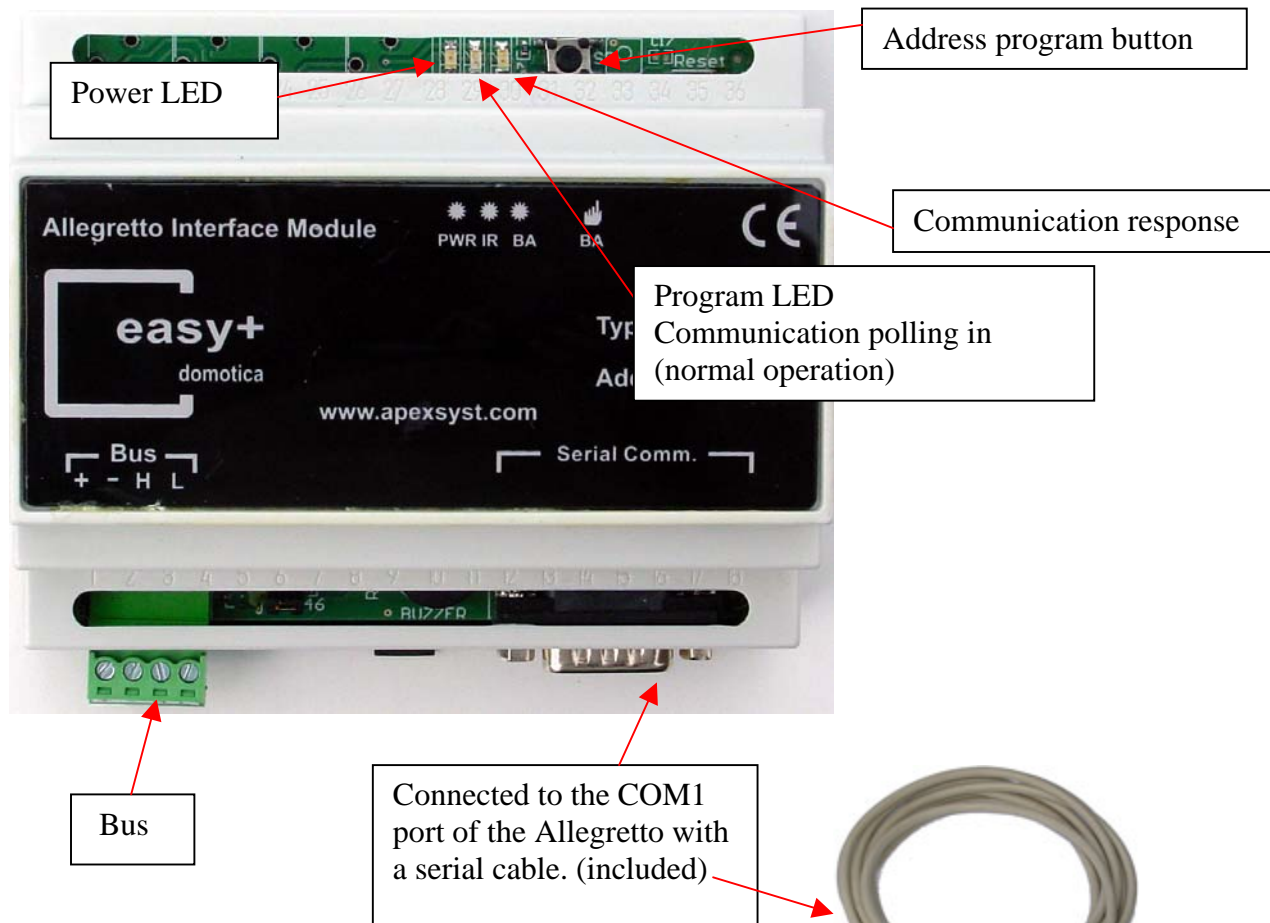
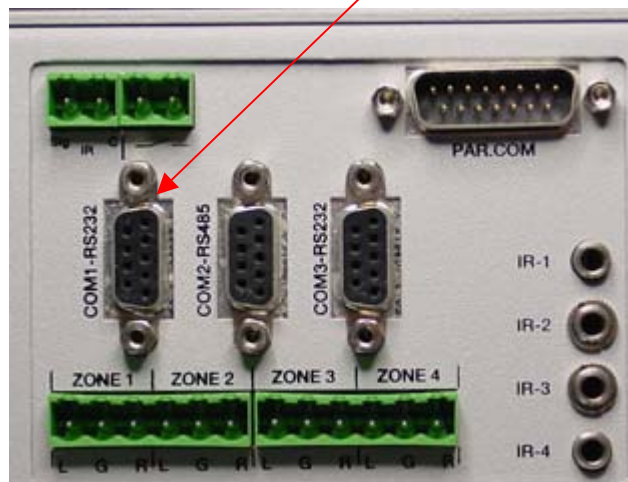


Figure 4 Allegretto backpanel



**5. Ordering information**

Main unit	ALL06121	Allegretto Interface Module
-----------	----------	-----------------------------

**6. Technical specification**

Supply voltage	12..24V
Current consumption	24mA @ 24V
Interface	Standard RS232
Dimension (h w d)	85 * 105 * 58 mm
Max wire diameter	0.75mm <sup>2</sup>
Operating temperature	0. . 60°C
Netto weight	130 gr.

1. General .....	1
2. Installation & connections .....	1
3. Module software configuration .....	1
4. Module hardware configuration .....	1
5. Ordering information .....	3
6. Technical specification .....	3

FIGURE 1 BASE ADDRESS PROGRAMMING .....	1
FIGURE 2 BUS TERMINATION .....	1
FIGURE 3 MODULE CONNECTIONS .....	2
FIGURE 4 ALLEGRETTO BACKPANEL .....	2